

# Laboratory Test Report

REPORT NUMBER: 42080515.1

PAGE: 1 of 4

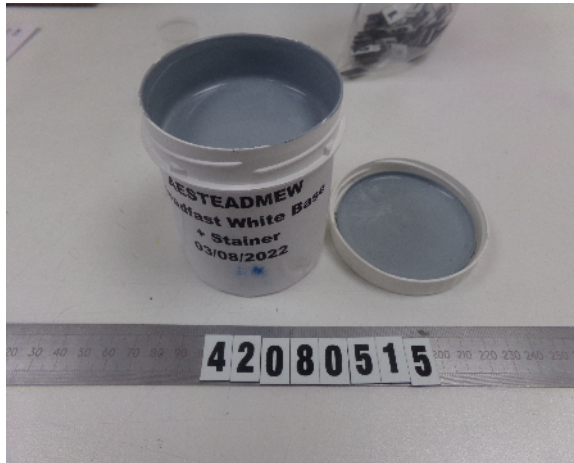
Prepared for: Ian Cowen  
FLAG PAINTS LIMITED, 8 Springfield Close  
Springfield Ind Estate, Burnham-On-Crouch  
Essex  
CM0 8UA

Sample described as: FLAG DURABLE ACRYLIC PAINT WHITE BASE + STAINER

|                    |                            |                      |                         |
|--------------------|----------------------------|----------------------|-------------------------|
| Number of samples: | 1                          | Reference number(s): | AESTEADMEW              |
| Date received:     | 05/08/2022                 | Date(s) tested:      | 05/08/2022 - 22/09/2022 |
| Packaging:         | Supplied without packaging | Declared age:        | 9+                      |
|                    |                            | Tested age grade:    | N/A                     |

Description: White base stainer

### Photo of submitted sample



Reference is made in this report to analyses carried out by a sub-contractor laboratory. This testing is outside the scope of UKAS accreditation.

I certify that the above mentioned sample has been tested in accordance with the standard / regulation(s) specified below and that it complies or otherwise as follows:

|  |      |
|--|------|
| EN 71-3:2019 + A1:2021 Migration of certain elements | PASS |
|--|------|

Prepared by



Tracy Hughes, Analytical Lab Supervisor

For and on behalf of  
Modern Testing Services



Mathew Boddy, Analytical Chemist  
Date: 22/09/2022

The results herein relate only to the items tested. This report is issued in accordance with MTS (UK)'s terms and conditions which are available on request.

REPORT NUMBER: 42080515.1

PAGE: 2 of 4

**Category II - Liquid or sticky****PASS**

The EN 71-3 screening test used by MTS (UK) tests for the migration of 16 of the 19 'elements' restricted by EN 71-3:2019+A1:2021;

It does not test for the presence of chromium III, chromium VI or organic tin specifically, it does however test for chromium and compliance with the limit for chromium III may be inferred from low results from these analyses (see below).

**A. White liquid**

The material(s) complied with the limits of the 16 elements specifically analysed for (see analysis table).

The migration of chromium from the sample(s) was not greater than the chromium III limit of 9.4 mg/kg, the material(s) can therefore be inferred as complying with the chromium III limit.

The material(s) required specific chromium VI migration analysis to determine compliance with the chromium VI limit, this was carried out by a sub-contractor and was found to comply with the limit.

The material(s) required specific organic tin migration analysis to determine compliance with the organic tin limit, this was carried out by a sub-contractor and was found to comply with the limit.

~~~End of page~~~

Prepared by Tracy Hughes on 22 September 2022 Signature:



Method of test: EN 71-3:2019 + A1:2021 Migration of certain element

## ANALYSIS RESULTS

Category 2

Date of test: 12/08/2022

Samples marked \* were sieved, those marked # were centrifuged. Details of additional acid required to lower pH and solvent used for extraction appear in [ ] in sample description.  
 Deviations from standard method: pH of conventional polymers and textiles not checked; samples only filtered if required to prevent ICP blockages.  
 Solid to acid extractant ratio exceeded 1:50 with sample weights below 100 mg and when additional acid was used to lower pH.  
 Quantities of soluble metals determined by inductively coupled plasma spectroscopy.  
 Test results marked ^ are within the area to which uncertainty of measurement applies & compliance/non-compliance cannot be inferred.

| Metals  | Al                    | Sb    | As    | Ba    | B     | Cd    | Cr     | Co      | Cu    | Pb    | Mn     | Hg    | Ni    | Se    | Sr    | Sn    | Zn    |    |
|---------|-----------------------|-------|-------|-------|-------|-------|--------|---------|-------|-------|--------|-------|-------|-------|-------|-------|-------|----|
| Limits  | 560                   | 11.3  | 0.9   | 375   | 300   | 0.3   | 9.4    | 2.6     | 156   | 0.5   | 300    | 1.9   | 18.8  | 9.4   | 1125  | 3750  | 938   |    |
| Wt (Mg) |                       |       |       |       |       |       |        |         |       |       |        |       |       |       |       |       |       |    |
| A       | 206<br>END OF SAMPLES | 154   | < 0.5 | < 0.3 | < 2   | < 4   | < 0.03 | < 0.030 | < 0.1 | < 1   | < 0.30 | 39    | < 0.3 | < 1   | < 3   | 96.0  | < 2   | 86 |
| Uncert% | 20.62                 | 33.17 | 24.50 | 33.17 | 20.62 | 24.50 | 24.50  | 24.50   | 20.62 | 33.17 | 20.62  | 33.17 | 24.50 | 24.50 | 20.62 | 33.17 | 20.62 |    |

Prepared by Tracy Hughes

Date: 22 September 2022

Signature:



**ANNEX A: DECISION RULES**

|        |                                                                                                                                                                                                                                                                                                                                                                                                                               |
|--------|-------------------------------------------------------------------------------------------------------------------------------------------------------------------------------------------------------------------------------------------------------------------------------------------------------------------------------------------------------------------------------------------------------------------------------|
| Rule 1 | <p>Applicable to any requirement stated to be 'Minimum xxxx' or 'Maximum xxxx':</p> <p>The use of constrained simple acceptance based on the difference between the stated limit (requirement) and the reported test result being greater than the measurement uncertainty (U) for a conformity probability of 95%. The risk of false accept or false reject is <math>\leq 2.5\%</math></p>                                   |
| Rule 2 | <p>Applicable to any requirement stated to be a range (e.g. XXX to YYY or AAA <math>\pm</math> B):</p> <p>The use of constrained simple acceptance based on the difference between the stated upper or lower limit (requirement) and the reported test result being greater than the measurement uncertainty (U) for a conformity probability of 95%. The risk of false accept or false reject is <math>\leq 2.5\%</math></p> |
| Rule 3 | <p>For tests based on subjective grading of a result using a 9-point scale (e.g. colour fastness, pilling, etc):</p> <p>Simple acceptance based on the test uncertainty ratio (T.U.R.) being <math>\geq 4</math>. The risk of false accept or false reject is up to 50% but will be reduced the further the reported result is away from the stated requirement.</p>                                                          |
| Rule 4 | <p>For tests based on a subjective assessment of a property (e.g. whether a component detaches or not):</p> <p>Simple acceptance based upon the conditions of testing falling within the criteria for test set out in the test method within a conformance probability of 95%. The risk of false accept or false reject of the testing conditions not meeting the specified requirements is 2.5%.</p>                         |
| Rule 5 | <p>If a validated test method (e.g. BS EN ISO standard) indicates that the measurement uncertainty has already been taken into account when calculating the test result then results may be reported using simple acceptance without the need for the application of the relevant decision rule set out above.</p>                                                                                                            |

The above rules will be applied by default unless we have agreed a decision rule to the contrary. MTS reserves the right to refuse to apply decision rules that do not satisfy the requirements of ISO 17025:2017. Unless otherwise stated in the report text above, uncertainty of measurement values are available upon request.